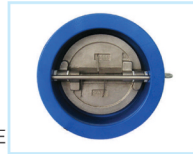


Wafer Double Door Check Valve PN16/Class125

Fig. 5306

Working Pressure and Temperature

Working pressure PN16/Class125.
 Temperature from -10°C to 120°C for EPDM seat.
 Temperature from -10°C to 82°C for NBR seat.
 Temperature from -10°C to 150°C for Viton seat.

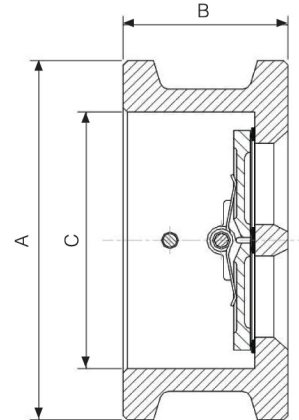


Flange Type

EN1092-2 PN10/PN16, ANSI B16.1 Class125, BS10 Table D/E

Materials Specification

| Part Name | Material | EN Spec. | ASTM Spec. |
|--------------|-----------------|--------------|--------------|
| Body | Cast Iron | EN-JL1040 | A126 Class B |
| Disc | Stainless Steel | BS970 304S15 | A351 CF8 |
| Seat | EPDM/NBR/Viton | Commercial | Commercial |
| Hinge Pin | Stainless Steel | BS970 420S37 | AISI 420 |
| Stop Pin | Stainless Steel | BS970 420S37 | AISI 420 |
| Pin Retainer | Stainless Steel | BS970 304S15 | AISI 304 |
| Spring | Stainless Steel | BS970 304S15 | AISI 304 |
| Washer | PTFE | Commercial | Commercial |
| Gasket | EPDM/NBR/Viton | Commercial | Commercial |



Dimensions (mm)

| Size | A | | | B | C |
|------|------------------|------------------|----------------------|-----|-----|
| | Table D/E Flange | ANSI 125# Flange | EN1092-2 PN16 Flange | | |
| 50 | 96 | 102 | 106 | 54 | 66 |
| 65 | 109 | 121 | 126 | 54 | 78 |
| 80 | 126 | 134 | 141 | 57 | 90 |
| 100 | 158 | 172 | 161 | 64 | 115 |
| 125 | 190 | 194 | 191 | 70 | 141 |
| 150 | 210 | 220 | 217 | 76 | 170 |
| 200 | 267 | 277 | 272 | 95 | 210 |
| 250 | 331 | 337 | 327 | 108 | 273 |
| 300 | 379 | 407 | 382 | 143 | 324 |
| 350 | 446 | 447 | 442 | 184 | 356 |
| 400 | 493 | 511 | 494 | 191 | 406 |
| 450 | 560 | 546 | 554 | 203 | 457 |
| 500 | 616 | 602 | 616 | 213 | 508 |
| 600 | 724 | 715 | 733 | 222 | 600 |