



Grooved End Double Door Check Valve | PN20/Class150

Fig. 5905-SS Disc.
Fig. 5906-Bronze Disc.

● Working Pressure and Temperature

Working pressure PN20/Class150.
Temperature from -10°C to 120°C for EPDM seat.
Temperature from -10°C to 82°C for NBR seat.
Temperature from -10°C to 150°C for Viton seat.

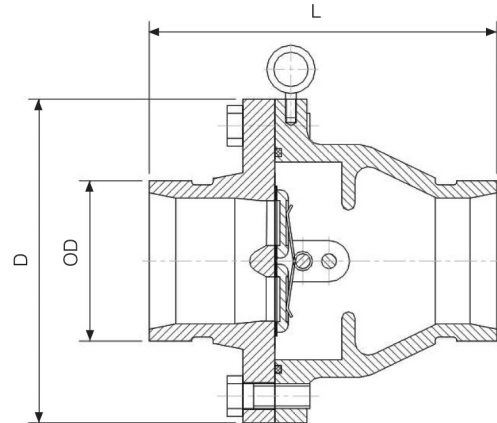


● Groove Type

Groove dimensions comply with Metric or AWWA C606 standard.

● Materials Specification

Part Name	Material	EN Spec.	ASTM Spec.
Housing	Ductile Iron	EN-JS1050	A536 65-45-12
Hex Bolt	Carbon Steel	Carbon Steel	A307B
Washer	Carbon Steel	BS970 050A20	AISI 1020
O-Ring	EPDM/NBR/Viton	Commercial	Commercial
Seat	EPDM/NBR/Viton	Commercial	Commercial
Shaft	Stainless Steel	BS970 420S37	AISI 420
End Face	Ductile Iron	EN-JS1050	A536 65-45-12
Spring	Stainless Steel	BS970 304S15	AISI 304
Disc	Stainless Steel	BS970 304S15	A351 CF8
	Bronze	EN1982 CC491K	B62 C83600
Eye Bolt	Carbon Steel	BS970 060A35	AISI 1035



● Dimensions(mm)

Size	2-1/2	3	4	5	6	8	10	12
OD	73.0/76.1	88.9	114.3	139.7/141.3	165.1/168.3	219.1	273.0	323.9
L	140	150	197	211	211	232	260	305
D	178	191	235	254	280	372	406	457