

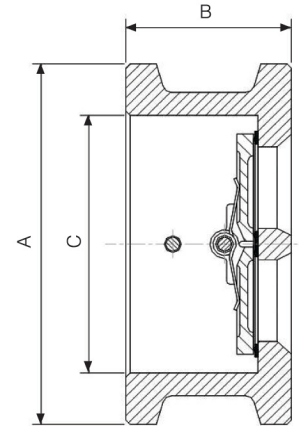
- Working Pressure and Temperature**  
 Working pressure PN25/PN40/Class250.  
 Temperature from -10°C to 150°C.



- Flange Type**  
 EN1092-2 PN25/PN40, ANSI B16.2 Class250.

- Materials Specification**

Part Name	Material	BS Spec.	ASTM Spec.
Body	Stainless Steel	970 316S16	A351 CF8M
		970 304S15	A351 CF8
Disc	Stainless Steel	970 316S16	A351 CF8M
		970 304S15	A351 CF8
Seat	Viton	Commercial	Commercial
Hinge Pin	Stainless Steel	970 316S16	AISI 316
Stop Pin	Stainless Steel	970 316S16	AISI 316
Pin Retainer	Stainless Steel	970 316S16	AISI 316
Spring	Stainless Steel	970 304S15	AISI 304
Washer	PTFE	Commercial	Commercial
Gasket	Viton	Commercial	Commercial



- Dimensions(mm)**

Size	A			B	C
	EN1092-2 PN40 Flange	ANSI 250# Flange	EN1092-2 PN25 Flange		
50	106	106	106	54	66
65	126	125	126	54	78
80	141	144	141	57	90
100	165	176	165	64	115
125	190	211	190	70	141
150	220	246	220	76	170
200	287	303	280	95	210
250	349	356	337	108	273
300	414	417	397	143	324
350	471	480	454	184	356